



GAT MONTHLY MEMBERSHIP PROGRESS REPORT

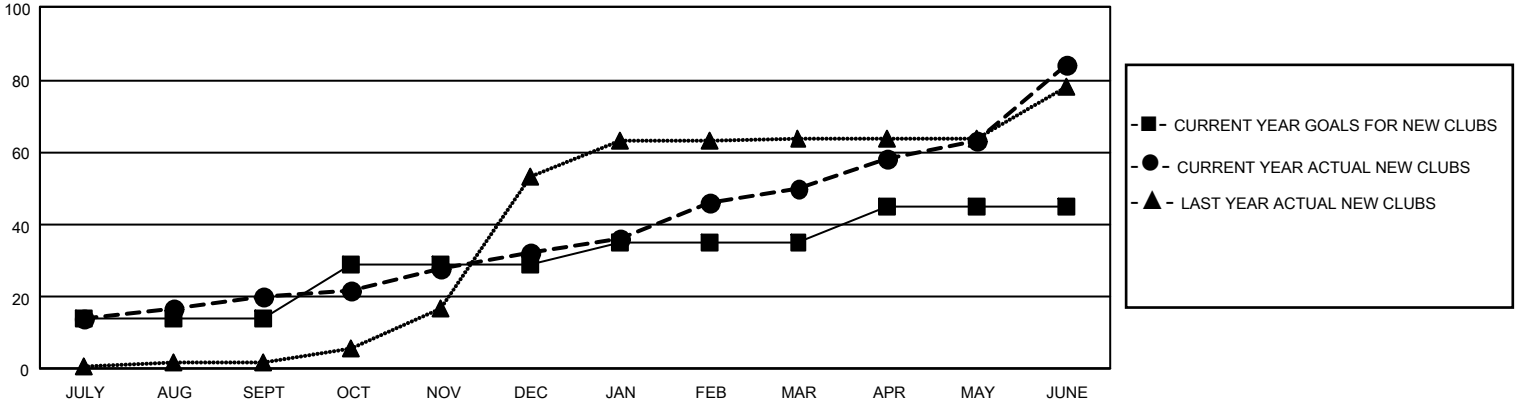
Results as of: 6/30/2022

GMT Constitutional Area 6, Group A

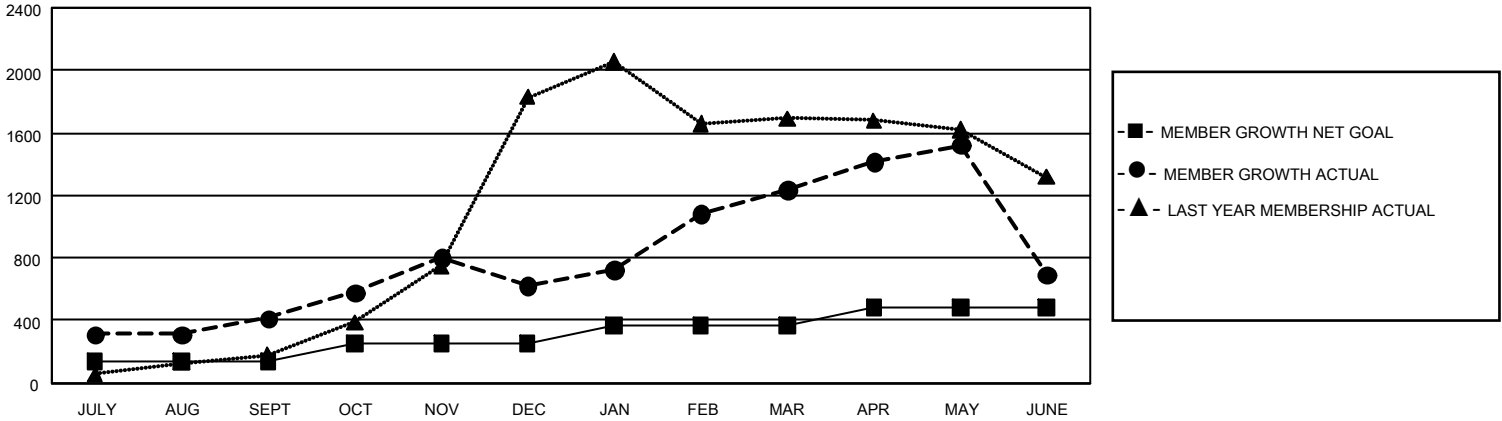
REPORT DOES NOT INCLUDE CLUBS IN UNDISTRICTED AREAS.

Clubs				Members			
RESULTS FOR 2021-2022				RESULTS FOR 2021-2022			
QUARTER	NEW CLUB GOAL	NEW CLUBS	DROPPED CLUBS	QUARTER	MEMBER GROWTH NET GOAL	MEMBER GROWTH ACTUAL	DROPPED MEMBERS ACTUAL (including transfers)
JULY/AUG/SEPT	42	20	10	JULY/AUG/SEPT	135	627	183
OCT/NOV/DEC	45	12	7	OCT/NOV/DEC	120	694	463
JAN/FEB/MAR	18	18	2	JAN/FEB/MAR	110	820	140
APR/MAY/JUNE	30	34	14	APR/MAY/JUNE	115	1,446	1,911

GOALS AND ACTUAL NEW CLUBS CUMULATIVE



GOALS AND ACTUAL MEMBERS CUMULATIVE



DROPPED CLUBS: 33	267 CLUBS OF 430 ADDED 1 OR MORE NEW MEMBERS	<u>GENDER DISTRIBUTION</u>	
<u>DROPPED MEMBERS</u>		MALE	6,533 (75.43%)
DECEASED	22	FEMALE	2,128 (24.57%)
CLUB CANCELLED	471	NON BINARY	0 (0.00%)
OTHER	2,204	PREFER NOT TO ANSWER	0 (0.00%)
TOTAL	2,697	TOTAL FAMILY UNIT MEMBERS	7,267
	CLICK HERE FOR CUMULATIVE MEMBERSHIP DATA	FAMILY MEMBERS PAYING HALF DUES	5,537